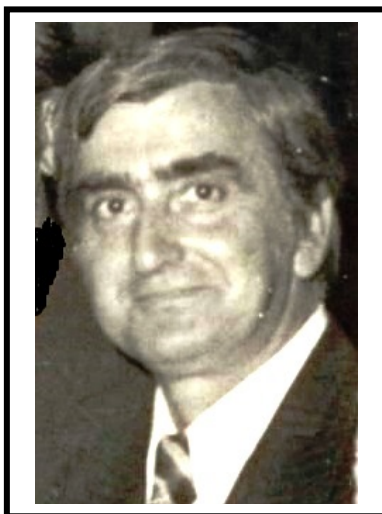


In memoriam – MARIUS ILIESCU (<i>Tania Zaharia, Maria Moldoveanu</i>)	“Cercetări Marine” Issue no. 52 Pages 184-187	2022
DOI:10.55268/CM.2022.52.184		

In memoriam – Marius ILIESCU
(03.01.1930 – 12.05.2022)



With deep regrets we found out that, at 12 May, 2022, our colleague and friend, engineer and marine researcher Marius Iliescu, aged 92 years, left us. Born on January 3, 1930, in Izvoarele commune, Prahova county, where his father was a priest, Marius Iliescu graduated from high school in Bucharest, then the Faculty of Ship and Port Operations, Department of Fisheries at the Technical Institute of Galati, in 1954. As soon as he graduated and until his retirement in 1994, engineer Marius Iliescu worked at the Marine Research Station "Grigore Antipa" in Constanta, which, after its reorganization in 1970, becomes the Romanian Marine Research Institute (RMRI), and later on the National Institute for Marine Research and Development "Grigore Antipa" (NIMRD).

Marius Iliescu has the chance as his first steps in the career to be guided by illustrious professors, who formed many series of specialists, such as Dr. Mihai Bacescu, director of the Bucharest Fisheries Research Institute, Dr. Rodica Teodorescu Leonte, director of the Tulcea Fisheries Research Station, and Nicolae Ionescu, director of the "Grigore Antipa" Marine Research Station in Constanta.

As soon as he took up his post within the Marine Research Station, Marius Iliescu worked with fishermen in the Razelm-Sinoe Danube lagoon

complex, where he fall in love with the wonderful deltaic landscapes and his lipovan peoples.

Tireless and eager efforts until his retirement in 1994, the scientific researcher Marius Iliescu will diversify and extend his activity on the entire Romanian continental shelf, and, on board of the research vessel of the institute, he took part in numerous expeditions viewing the industrially exploited fish shoals.

Starting within 1968, in order to put into operation the nursery and the incubation station from Perisor site, Marius Iliescu was included in the aquaculture team of the institute, being appointed responsible for the research activity. Furthermore during 1972 and 1993, he was working in the aquaculture laboratory within RMRI, participating in various monitoring and aquaculture activities.

Although retired, Marius Iliescu remained in permanent contact with his younger colleagues, who carried on the work he had begun.

Marius Iliescu, or Mariusicu, as his close colleagues and friends flattered him, was not just researcher, but also a fine observer of lakes and marine life, which he put into delicate poems and drawings. For a long time, they remained just for him, for his joy, locked in notebooks, until 2014 year, when, at our suggestion, Marius Iliescu edited them in two digital volumes, the first comprising his lyrics written between 1955-1995.

Here is what he notes in the “Clarifying Word” in the first volume: *„Reading these verses there is easy to reveal the main feature that welds the friendly and family connection between the marine research teams on the Romanian Black Sea coast. We regret that many of our good colleagues and friends are no longer with us, but their memory allows us to feel them almost in our minds and hearts. We also regret that more the half of his lyrics could not be found... These lyrics represent for all a return in time or in the youth of some octogenarians today... „*

The second one includes his graphic works created during the research expeditions in the Danube Delta, and in the fishermen communities with whom he developed a special relationship. They are unique pictures, some of them preserved only in our memory. Although faded by time, both the lyrics and drawings keep continue something a glow coming from the bottom of the author's soul.

Thank you, our dear colleague and friend Marius Iliescu, for keeping them and sharing them with us, to remember these old days, when both the sea and the Delta were wild lands, where for many of us had the lack and courage to enter.

Thank you for everything you have given us, and we wish God to rest you in peace!

Relevant scientific papers:

- Cautis Il., **Iliescu M.**, Maximov A., 1957. The problem of the Caspialose fund in the Black Sea. Bul. Inst. Cerc. Pisc., 16, 1, 47-55 (*in Romanian*).
- Cautis Il., **Iliescu M.**, 1962. The characteristics of sprat, anchovy and horse mackerel shoals and their behavior in the exceptional conditions of 1961 on the Romanian Black Sea coast. Bul. Inst. Cerc. Pisc., 21, 3, 46-58 (*in Romanian*).
- Iliescu M.**, 1962 Observations on the presence, behavior and composition of anchovy flocks on the Romanian Black Sea coast. Bul. Inst. Cerc. Pisc., 21, 1, 35-45 (*in Romanian*).
- Cautis Il., **Iliescu M.**, Lușcan S., 1964. Observations on the distribution and dynamics of ichthyoplankton near the Romanian coast during 1960-1963. Bul. Inst. Cerc. Pisc., 23, 1, 20-31 (*in Romanian*).
- Cautis Il., **Iliescu M.**, 1968. The composition of the breeding population of Shad (*Alosa pontica pontica* Eichw.) entering the Danube, from 1956 to 1965. Rapp. Comm.inst.mer Médit., 19, 2, 247 (*in French*).
- Iliescu M.**, 1968. Observations on Turbot (*Scophthalmus maeoticus*) fishing off the Romanian coast in 1965. Rapp.Comm.inst.Mer Médit., 19, 2, 265-267 (*in French*).
- Iliescu M.**, 1968. Observations on anchovy fishing and behavior on the Romanian coast of the Black Sea in the period 1960-1968. Rapp.Comm.inst.Mer Médit., 19, 2, 261-263 (*in French*).
- Iliescu M.**, Manea V., 1968. Contribution to the knowlwdge on the biology of the young plaice along the Romanian coast line. Trav. Mus. Hist. Nat. „Grigore Antipa” Bucuresti, 8, 1: 485-491.
- Iliescu M.**, Manea V., 1969. On the fish behaviour and stocks structure of turbot (*Scophthalmus maeoticus*) along the Romanian coast during 1962-1965. Trav. Mus. Hist. Nat. „Grigore Antipa” Bucuresti, 8.
- Iliescu M.**, Radulescu I., 1968. Note on the spread of the gastropod *Rapana thomasiana besoar* L. on the Romanian coast. Bul. Inst. Research. Pisc., Bucharest, year 27, 3: 49-52 (*in Romanian*).
- Mărgineanu C., **Iliescu M.**, 1968. The influence of zooplankton trophic biomass on planktivorous fishes of the Romanian Black Sea coast. Report. Com. Int. Medit. Sea, 19, 3, 423-425 (*in French*).
- Iliescu M.**, Roventa V., Stanescu S., 1971. Data concerning the relation between length and weight of some fishes of the Black Sea. Report. Com. Int. Mer. Medit., CIESM, Monaco, 20.3: 457-459 (*in French*).
- Manea V., **Iliescu M.**, 1971. Observations on the growth rate of plaice fished in front of the Romanian coast during 1967-1968. Scientific papers, St.Nat., Inst. 3-year-old teacher Constanta, 2: 51-54 (*in Romanian*).

- Manea V., **Iliescu M.**, 1971. Contributions to the study of fishing and biology of anchovies (*Engraulis encrassicholus ponticus*) on the Romanian coasts of the Black Sea. Scientific papers, St.Nat., Inst. Pedagogical for 3 years Constanta, 2: 99-101 (*in Romanian*).
- Trandafirescu I., Ghitescu E., **Iliescu M.**, 1979. Preliminary data concerning the rearing of young pike-perch (*Stizostedion lucioperca*) in a brackish environment. Cercetari Marine, IRCM Constanta, 12: 261-273 (*in French*).
- Alexandrov L., **Iliescu M.**, Bilal I., Popa M., 1994. Dynamics and structure of zooplankton associations in Sinoe lagoon in 1993. Scientific Annals of INCPDD Tulcea, 3: 135-144 (*in Romanian*).
- Bilal I., **Iliescu M.**, 1984. Study of organochlorine insecticides in the Sinoe lagoon. Cercetari Marine, IRCM Constanta, 17: 305-310 (*in French*).
- Popa M., Roban A., **Iliescu M.**, 1996-1997. Evolution of the phytoplankton biodiversity of the Sinoe lagoon during the period 1970-1995. Cercetari Marine, IRCM Constanta, 29-30: 437-456 (*in French*).

Lyrics and graphics:

- Iliescu M.**, 2014. Memories, thoughts and smiles from long gone times, Constanta, 117 pp.
- Iliescu M.**, 2015. Images from long gone times, Constanta, 39 pp.